



Certificate SGSCH-COC-090027

The Organization

# MS PACKAGING S.r.l

Via Sette Re, 84 - 80022 Arzano (NA) - Italy

has been assessed and certified as meeting the requirements of

## FSC® Chain-of-Custody

The company was assessed against the following standards:

- FSC-STD-40-003 V2-1 Chain of Custody Certification of Multiple Sites – November 2014
- FSC-STD-40-004 Version 3.0 FSC Standard for Chain of Custody Certification – April 2017
- FSC-STD-40-007 V2-0 Sourcing reclaimed material for use in FSC Product Groups or FSC Certified Projects – April 2011
- FSC-STD-50-001 Requirements for use of the FSC trademarks by Certificate Holders

for the products detailed in the scope below

**The scope of the record appears on page 2 of this certificate**

This certificate is valid from 9 March 2021 until 17 December 2025 and remains valid subject to satisfactory surveillance audits.

Re-certification audit due 90 days prior to expiry date.

Issue 5. Certified since December 2015

SGS Ref # IT15/0959

This is a multi site certification scheme  
Additional site details are listed on the subsequent page

Authorised by

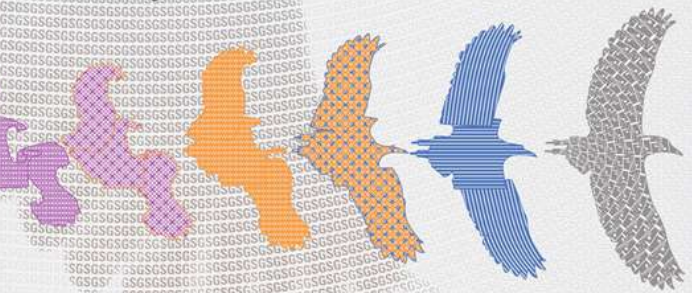
SGS Société Générale de Surveillance SA  
1, place des Alpes, 1211 Geneva, Switzerland  
t +41 (0)22 739-91-11 f +41 (0)22 739-98-86 www.sgs.com



The mark of responsible forestry

The validity of this certificate shall be verified on <http://info.fsc.org/>  
For the full list of product groups covered by the certificate see <http://info.fsc.org/>  
This certificate itself does not constitute evidence that a particular product supplied by the certificate holder is FSC-certified (or FSC Controlled Wood).  
Products offered, shipped or sold by the certificate holder can only be considered covered by the scope of this certificate when the required FSC claim is clearly stated on sales and delivery documents. This certificate remains the property of SGS.  
The certificate and all copies or reproductions shall be returned or destroyed if requested by SGS.

Page 1 of 2



This document is a Web version of SGS certificate for electronic use exclusively. It shall only be available by clicking on SGS Certification Mark which has been posted on Your website. It shall not be printed in anyway. This document is copyright protected. No content or appearance may be reproduced without the express written permission of SGS. Any misuse, alteration, forgery or falsification is unlawful.



# MS PACKAGING S.r.l

## FSC® Chain-of-Custody



Issue 5

Detailed scope

**Acquisto di carta pre-post consumer per la produzione di bobine in carta (FSC riciclato, sistema a credito). Acquisto di carta certificata (FSC misto, FSC riciclato), produzione e vendita di carta e imballaggi in cartone ondulato e non (FSC misto, FSC riciclato, sistema a trasferimento).**

**Purchase of pre-post consumer paper for production of reels (FSC Recycled, credit system). Purchase of certified paper (FSC mix, FSC Recycled), production and sales of paper and corrugated packaging or not (FSC mix, FSC Recycled, Transfer System)**

The covered products and processes are performed by the network of sites and not necessarily by each of them.

Additional facilities

Via dei Carrari, 24 - 84131 Salerno - Italy



The mark of responsible forestry